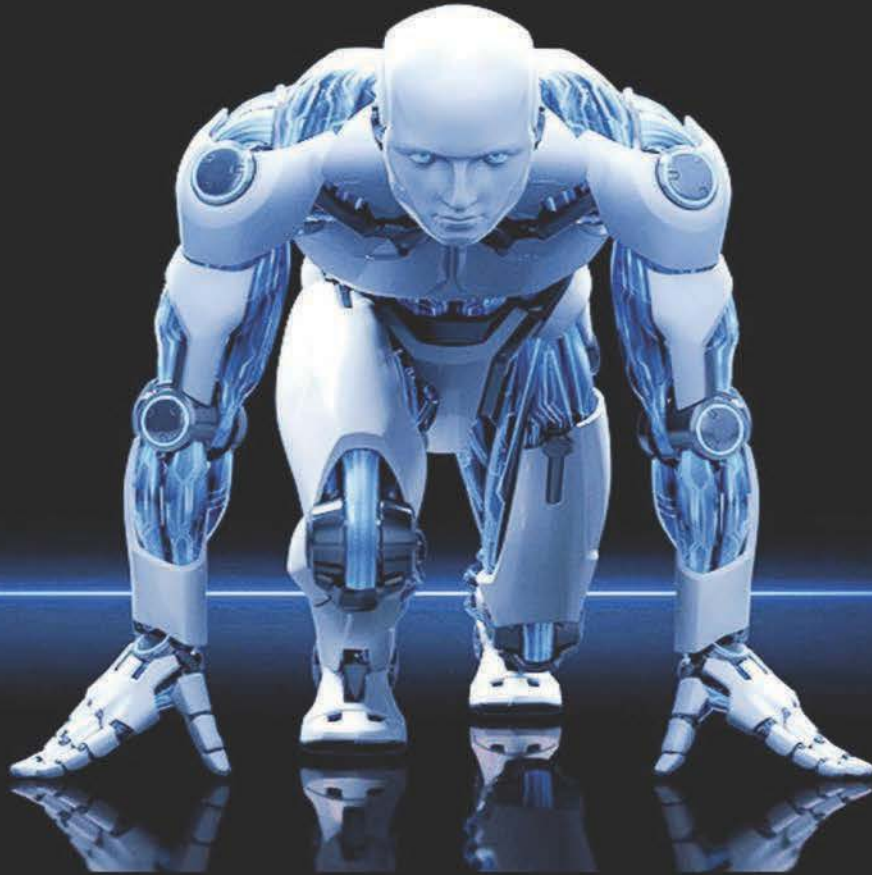




Connectify

smart people smarter living



www.connectify.com.pk



CONNECTIFY - SMART HOME AND BUSINESS AUTOMATION

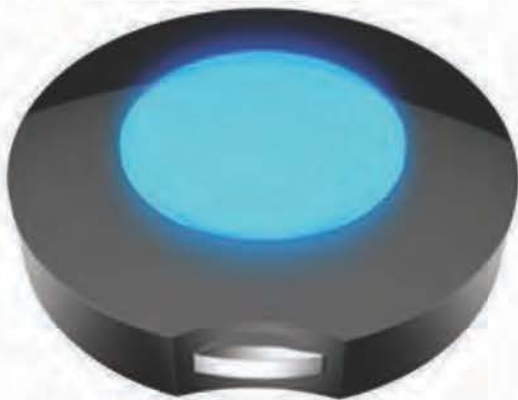
Connectify Pakistan is the First provider of smart home and business services in Pakistan. Connectify delivers an integrated smart home and business system with in-house consultation, professional installation and support delivered by its Smart tech Pros, as well as 24/7 customer care. Dedicated to redefining the smart home/business experience with intelligent products and services.

Connective Pakistan is an IoT company and our vision is to take our country to next level of technological revolution keeping pace with other tech giants around the globe. While many countries in East Asia, Europe and North America have billions of IoT devices, Pakistan is still taking baby steps. We take pride in being the 1st Smart home and business service provider in Pakistan.

The Internet of things (IoT) is the network of physical devices, vehicles, home appliances, and other items embedded with electronics [1], software [2], sensors [3], actuators [4], and connectivity [5] which enables these things to connect, collect [6] and exchange data [7], creating opportunities for more direct integration of the physical world into computer-based systems, resulting in efficiency improvements, economic benefits, and reduced human exertions.

The number of IoT devices increased 31% year-over-year to 8.4 billion in the year 2017 and it is estimated that there will be 30 billion devices by 2020. The global market value of IoT is projected to reach \$7.1 trillion by 2020.

CONNECTIFY PAKISTAN (PVT) LTD
info@connectify.com.pk
www.connectify.com.pk



Z-WAVE HUB

System(security & safe system)

Combination WiFi+3G / WiFi only

Input Voltage: 5V/1A

Infrared Radio Frequency: 38KHz

Frequency: 908.4MHz(US)

/ 868.4MHz(EU) etc.

Centre Controller, the brain of the

Working Environment: Indoor

Working Temperature:0~45C

Working Humidity:≤80%

Installation: Ceiling/ Wall

USB mini Gateway

Power by any USB socket

Flexible installation, easy to hide



Connectify Cloud Server

About Z-wave

Z-wave is the leading interactive

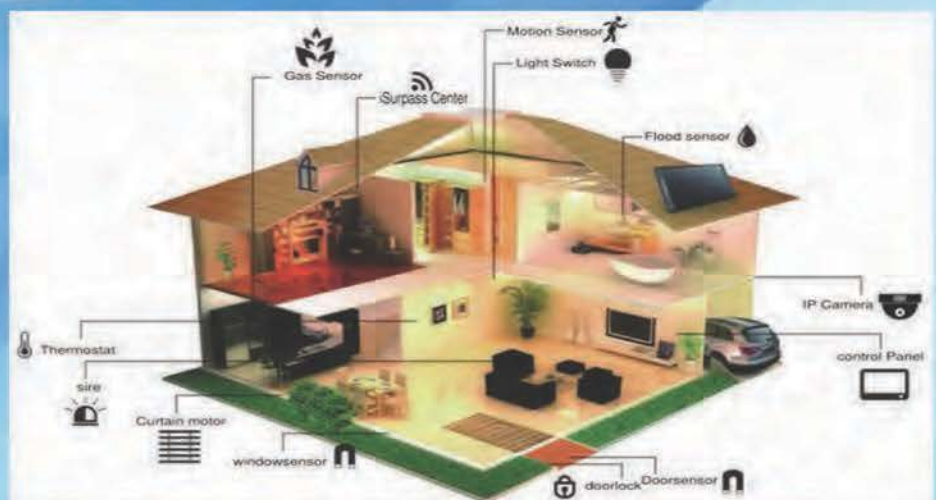
smart home technology in the world today.

Z-wave widely adopted inside everyday

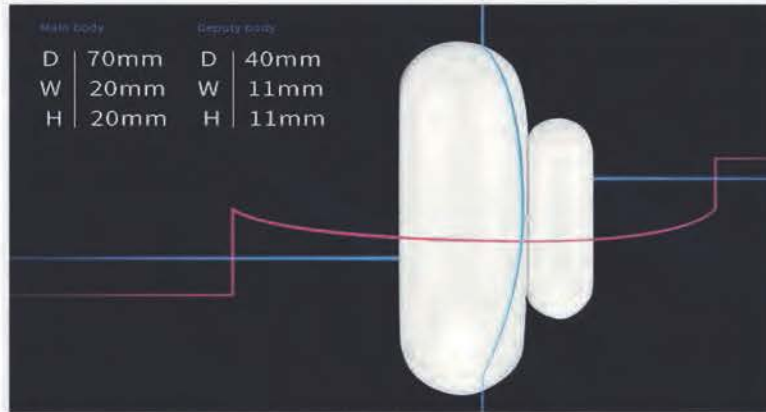
products such as lights, locks, thermostats,

secure communications and mesh network

coverage. It is best in cost and overall performance.



DOOR/WINDOW SENSOR



Automatically detect when the doors
& windows are open or close.

Connected with alarm sensor, once two
pieces split up, the sensor will trigger the alarm and
send message to smart phone

Apply to house, factory, shops, hotel,
office, bank, warehouse, library etc

Easy installation

Z-wave protocol

Wireless sensitive up to 150feet

Working Voltage: 3V Battery

Launch Distance: indoor 30M/ Outdoor 50M



MOTION SENSOR

Designed to detect the illegal invasion of moving objects.

Easy installation on wall or any surface

Z-wave protocol

Compatible with light & sound alarm, automatically turns on light & alarm when motion is detected, and message will be sent to smart phone at once

alarm, automatically turns on light & alarm when motion is detected, and message will be sent to smart phone at once

Adjustable day/night threshold

Recommended installation height at 2.4m

Detection Range: 6m

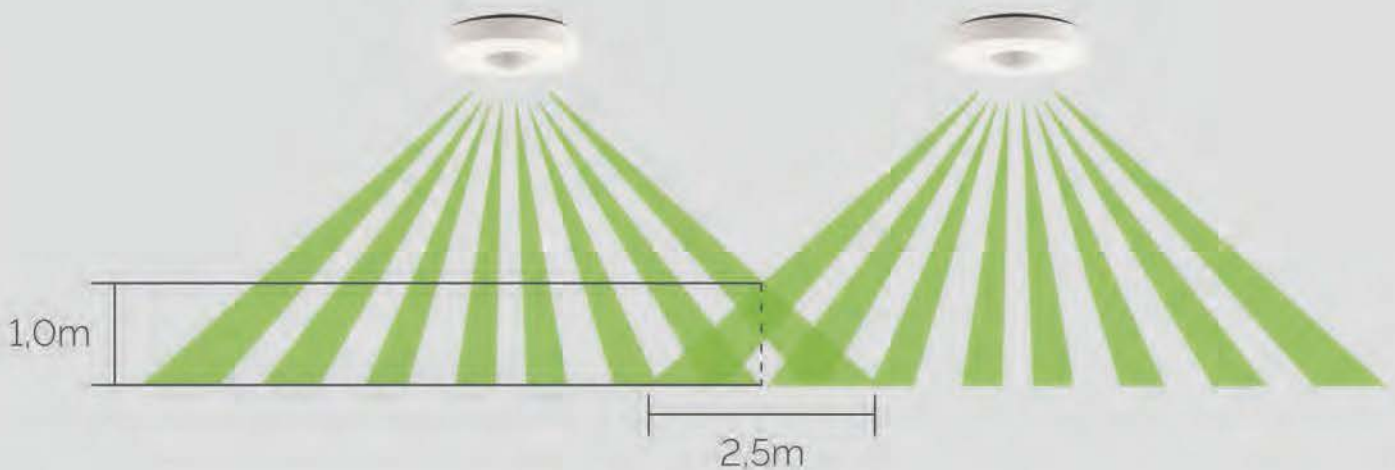
Working Voltage: 3V Battery

Battery life: 1 year

Working Temperature: 0~45°C

Humidity: ≤95%RH

Size : 100x100x33.5mm



WIRELESS IP CAMERA

- Connect to LAN or internet or wireless
- Compatible with Connectify gateway
- Rotate 360 degree for a 3D view of your home anytime and anywhere.
- Comes with microphone for remote voice conference
- Designed to stream video that can be accessed remotely
- Support TF card recording
- One mega pixels bring high quality image
- Power Source: 5V DC
- Packing dimensions: 95x100x125mm
- 720P bullet camera for in/out door. IP 66 waterproof
- 720P Indoor PTZ camera



SMART SWITCH



Technical details

Material	ABS+toughened glass
Color	White
RadioFrequency	868.42MHz (CN, EU) 908.42MHz(US) 921.4MHz (AU) 869.2MHz (Russia)
Power Supply	110 - 230 V AC \pm 10% 50/60Hz
Maximum load current for single AC output	8A / 230V
Power of output circuits for single AC(for resistive load)	800W(\leq 4A)
Electricity consumption	< 0.5W
Operational temperature	0~40℃
Temperature limits	105℃
Relative Humidity	\leq 95%RH
For installation in electrical box	82 x 82 x 45mm
Range	up to 50 m outdoors up to 30 m indoors (depending on building materials)
Dimensions (H x W x D)	86 x 86 x 35 mm
N.W	0.16kg
G.W	0.24kg
Package Inner Box	14x12x5cm

Elegant Z-wave touch panel switch
Compatible with Z-wave smart home devices

1 gang, 2 gang, 3 gang available
Widely used in electronic products and lights

Live On/Off Status updated on Z-wave app all the time

Easily check & control all the appliances status by App

Material: ABS + toughened glass

Power Source: 110-250VAC

Max Load: 800W (\leq 4A)

Size: 86x86x37mm(EU)

120x74x35mm(US)

SMART DIMMER

Metal Frame resistant



- Elegant Z-wave touch panel switch
- Compatible with Z-wave smart home devices
- Widely used in electronic products and lights
- Live On/Off Status updated on Z-wave app all the time
- Easily check & control all the appliances status by App
- Material: ABS + toughened glass
- Power Source: 110-250VAC
- Max Load: 800W ($\leq 4A$)
- Size: 86x86x37mm(EU) 120x74x35mm(US)
- On/off, brighter, darker
- To dimmer light darkness or brightness

94*50*33mm



SMART PLUG

US/UK/EU/AU optional

Remote check appliance power
ON/OFF on APP
Compatible with smart home products, power supply
Promptly shutdown power supply

Check power consumption at any time
More safety and save energy
Z-wave protocol
UK/ANZ/ US Model
Power Source: AC 100 – 220V, 50/60Hz
Max load: 2200W/10A
Operational Temperature: 0°C to 45°C
Operational Humidity: 10 – 70% RH
Size: 120 x 60 x 30mm

SMART SOCKET

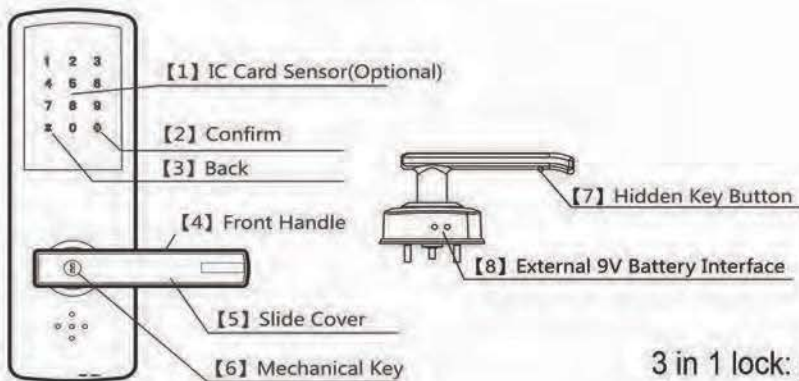


Check power consumption at any time
More safety and save energy
Z-wave protocol
Power Source: AC 100 – 220V, 50/60Hz
Max load: 800W/4A
Operational Temperature: 0°C to 45°C
Operational Humidity: 10 – 70% RH

SMART iLOCK15

A smart door lock is very necessary for people's daily life.

Structure



Front Panel Structure

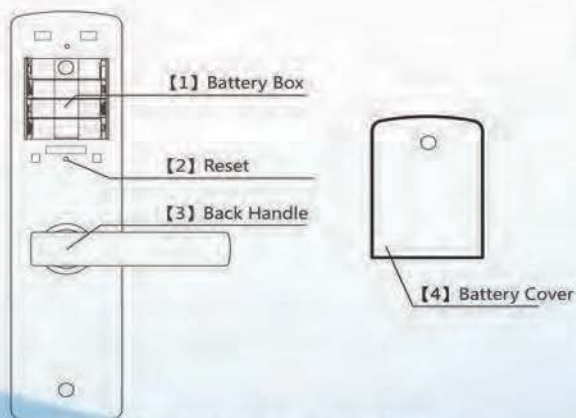


3 in 1 lock: pin code/traditional keys /APP

Master Password Capacity:9set

User Password Capacity:221set

Under-voltage Alarm:5.0V(±0.2V)



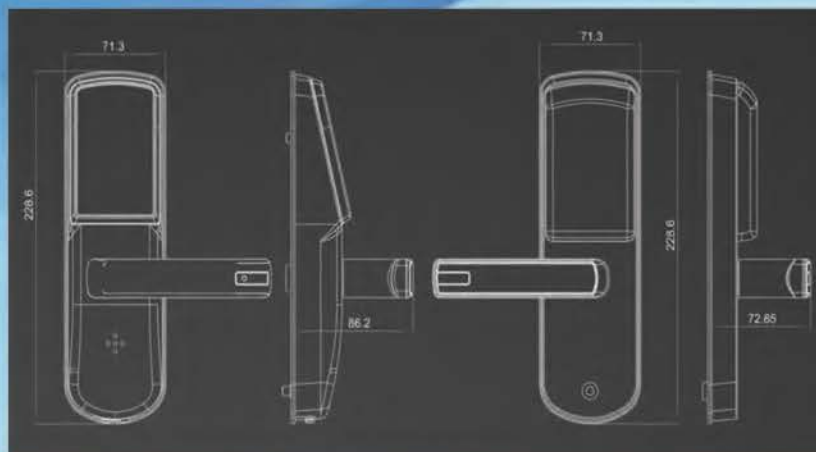
Back Panel Structure



[1] Single Latch

[2] Square Shaft Hole

Latch



SMART iLOCK3

Wireless based on Z-wave protocol

5 in 1 lock: fingerprint/pin codes/ IC card/ traditional key/
mobile phone APP

Fingerprint verification time: <1s

Semi conductor fingerprint reader

Card read distance: 1.5cm

Card Type: Mi fare One S50

Master Password Capacity: 9set

User Password Capacity: 221set

Under-voltage Alarm: 5.0V(±0.2V)



Touch screen keypad



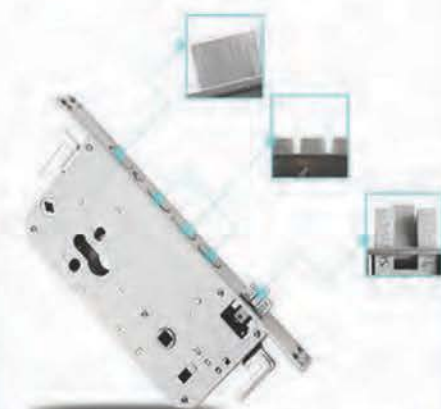
Lock back button



Sliding Cover



High Quality Handle



FINGER

PRINT



EMPTY

PASSWORD



CARD



CHARGING



FREE

HANDEL



Zinc Alloy



Specification:

Support card type:	Mifare1 S50 card
Color:	Golden / Red copper / Black
Coating:	Zinc Alloy
Display screen:	OLED
Resolution rate:	500DPI
Read time:	<1s
FRR	≤0.01%
Error rate:	≤0.0001%
User Capacity(Admin)	9 groups (include fingerprint,password,card)
User Capacity(User)	221 groups (include fingerprint,password,card)
Power supply:	6V (AA*4)
Battery life:	≥1 year
Low voltage alarm level:	4.8V
Static current	<40uA
Dynamic current	<200mA
Door Thickness	38~120mm
Working temperature:	-10℃~55℃
Storage temperature:	-15℃~70℃

Item	Parameter
Door unlocking mode	Fingerprint, card, code, mechanical key, APP
Fingerprint read time	<1s
FRR	<0.01%
FAR	<0.0001%
User Capacity (Admin)	9
User Capacity (User)	221
Power Supply	6V(AA*4)
Battery Life	>1year
Low voltage alarm level	1.8V
Static current	<40uA
Dynamic current	<200mA
Door Thickness	38~120mm
Working temperature	-10℃~55℃
Storage temperature	-15℃~70℃

SMART CURTAIN MOTOR



Automatically open and close the curtain by phone

Built-in wireless receiving, compatible with smart home devices

Z-wave protocol

Support the scene, positioning, lower shutter blade flips open control,

Easily set-up scenes, like: meeting mode close the curtain;

relax mode opening the curtain..

Support varying track length for different requirements

Power Source: AC110V/220V

Curtain Motor P/N	
Color	White
RadioFrequency	868.42MHz (CN、EU) / 908.42MHz(US) / 921.4MHz-Australia/ 869.2MHz-Russia
Transmission Rate	9.6/40/100kbps
Voltage	220V AC 50/60Hz
Electric Current	0.15A
Rated Power	13W
Safe Load	50kg
Speed	20cm/s
Protection Level	IP20
Constant Working Time	20min
Wireless Communication Range	Up to 100m outdoors Up to 30m indoors (depending on building materials)
Application	Indoor use
Working Temperature	5~45℃
Relative Humidity	10%~70%RH
Storage Temperature	0~50℃
Storage Humidity	5%~80%RH
Size	316*68*53mm
N.W	1.50kg
G.W	1.60kg



SIREN ALARM

Alarm siren, make sounds

Compatible with smoke sensor, gas sensor,
water sensor, help to warn people from danger.

Z-wave protocol

Working Voltage: DC5V/1A(AAA 1.2V*4)

Alarm Current: <200mA

Alarm Loudness: 80~110dB

Working Temperature: 0~50C

Humidity: ≤80%

Transmission speed: 9.6/40/100kbps

Linkage with door sensor/motion sensor

etc. When sensor triggered, siren alarm will make noise



SMART SOS TAG

SOS. Unlock, \$ Scenario Combination

Suitable for elderly and young children

Z-wave protocol

Compatible with all Z-wave devices

For emergency, press the SOS tag, all
family members will receive the message
immediately

Operating Range: indoor 30M/ Outdoor 50M

Power Source: 1xCR2025-75m Ah

Operating Temperature : 0~40C

Standby Consumption: ≤5uA

Size: 65x44x18mm





A smoke sensor is a device that senses smoke, typically as an indicator of fire. Once the smoke level is dangerous, the sensor will trigger the alarm and send message to customer immediately.

6. How to replace battery



- A: Counter-clockwise, and remove the outer part of the detector body.
B: Remove the old battery, Put new battery negative down, press and hold the button anti-card, and diagonally put into place.
C: Rotate to the left about 30 degrees to the wall base, and press clockwise to the end.

7. Reminding

The detector is based on the wireless transmission of the alarm signal, when the detector mounting region has a specific radio transmission obstacles, it will affect the detection results.

8. Malfunction analysis and solution

Problem	Reason analysis	Solution
Smoke alarm beeps about once a minute	Low power	Replace battery
Frequent false alarm	Sensor has much dust	Use vacuum cleaner to clean up

GAS SENSOR

Also called gas detector, detect the gas leakage, enhance safety and security.

Z-wave protocol Working Voltage: AC220V

Alarm Concentration: 6% LEL(gas)

Alarm Indication: Red LED flashing

Launch Distance: indoor 30M/ Outdoor 50M

Working Temperature: 0~45

Storage Temperature: -10~55C

Humidity: 10% -95%RH

Size: 110x70x40mm

SMOKE SENSOR



Z-wave protocol

Working Voltage: 9V Battery(1PC F22)

Alarm Indication: Red LED flashing

Launch Distance: indoor 30M/ Outdoor 50M

Working Temperature: 0~45C

Humidity: ≤95%RH

Size: Φ128x38mm



SMART VALVE OPERATOR



Smart Valve Operator

Wireless Z-wave water/gas shutoff controller

Compatible with smart home devices

Easy installation, no plumbing required

Adjustable rocker arm good for all standard ball valve handles and 2 alternative mounting brackets to fit your set-up

Easily set-up water scene:

Water leaking warning + valve operator + alarm

Easily set-up gas scene:

Gas leaking warning+ valve operator + alarm

Automatically switch off the water/gas tap when water/gas sensor alarm warning



WATER/FLOOD SENSOR



Monitor the water leakage, prevent water damage even flooding.

Z-wave protocol

Working Voltage: 3V(Battery)

Alarm Indication: Red LED flashing & buzzer

Alarm output: wireless Z-wave alarm

Working Temperature: 0~45C

SMART Wi-Fi IP DOOR BELL



Door Phone Door bell Intercom System

This video phone is a convenient and secure way to monitor and control an entryway such as a door or gate.

This item is wireless; easily installed and operated. It is widely used for private houses, villas, flat, apartment, offices & small businesses.

Features

1. 2.4GHz digital frequency ensures strong and stable signal transmission;
2. Camera with 2 infrared lights for night vision
3. Indoor monitor can save about 100 photos;
4. 7" TFT color display and 0.3Mega pixel camera;
5. Hands-free intercom, unlocked by wireless control
6. Lithium battery is replaceable and rechargeable



Outdoor Unit

Work frequency	2.4GHz ISM
Camera pixel	0.3 mega
Camera lens view angle	120°
Power supply	Four AA batteries
Work current	200mA
Standby current	0mA
Battery standby duration	Over one year (high-quality alkaline batteries)
Night vision	2 IR lamps
Installation	Door viewer
Work temperature	-20°C ~+50°C
Size (internal part)	68*68*15mm
Size (external part)	75*125*20mm
Weight	210g



Smart Wi-Fi/IP Video Door Bell



2 way Video intercom



motion detection



remote surveillance



picture capture



unlock via app



keypad coded



tamper alarm



leave message



video record



multiple user support



clear IR lamp



optional wireless chime



Camera pixel	720P; picture resolution adjustable from 1280*720 to 640*480
Work current	450mA
Frame rate	25fps-30fps
Camera view angle	150°
Work voltage	DC12V-36V/AC8V-24V
Work temperature	-30~+60℃

Wireless Video Peephole Door Phone

Battery Standby Duration over 1 Year



Video intercom



Long transmission range



picture capture



120 camera view



optional unlock by
433MHz



Video surveillance



LED Light night vision



battery operator



day installation



Connectable with
3 monitor



Work frequency	2.4GHz ISM
Camera pixel	0.3 mega
Camera lens view angle	120°
Power supply	Four AA batteries
Work current	200mA
Standby current	0mA
Battery standby duration	Over one year (high-quality alkaline batteries)
Night vision	2 LED lamps
Installation	Door viewer
Work temperature	-20℃~+50℃
Size (internal part)	68*68*15mm
Size (external part)	75*125*20mm
Weight	210g



Office : Ground Floor Building # 12-C
lane 4, Ittehad Cmmercial phase 6 DHA Karachi
call : 0300 2334333, E-mail : info@connectify.com.pk
www.connectify.com.pk